

GREAT GRADS' SUCCESS!

All of our graduating classes have done SO WELL!

In Goma, all 22 sixth-graders passed with flying colors. Congrats, Community Charity School!!!

In Kinshasa, all 12 secondary students completed their state exams well & received the coveted diplomas (like A.A.) which identify them as educated citizens.

At FEBA's sewing school, all 11 young women aced the state exams, & one of them, Malinga Esombo Miriam, was the NATIONAL FIRST PLACE! There will be some photos next time.

What Follows Success



There is a down-side to being the best, however. Candidates are tested for a week; 3 days are general education (now including some French, as well as the local language, which in Kinshasa is Lingala).

Then comes the practical. Pictures of garments are numbered & each student draws one out of the hat; she has two days to create that item: dress, jacket, suit, etc. There are no patterns; sewing schools must supply materials, machines, etc.

FEBA's students are known to excel so jury members have been requiring them to take the jury's measurements & create fine things for them, which they appropriate without paying even for the materials! FEBA has protested, but so far no redress.

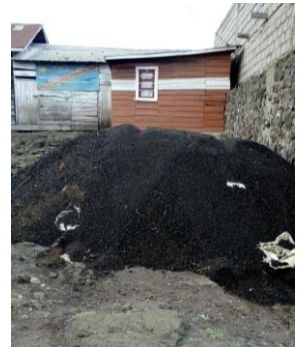
BUT the joy of a sewing career is clear. Ms. Chantale Musau had a very hard time when she first graduated; too poor to have her own home & shop, she worked in a group where she was mistreated. When FEBA learned of it, Maman Monique invited her back to sew & share in guiding the next generation. Graduates in the last class (see Dec. 2021 news) praised her for the quality of her help. Here she joyously shows off her handiwork.

Regrets from Congo

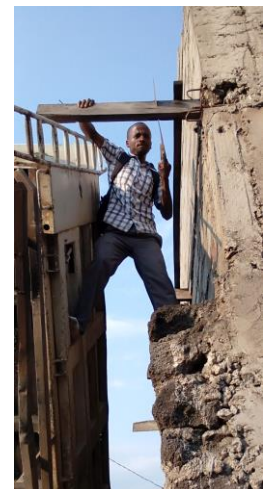
Madame Monique Misenga Mukuna, our dear "Maman Monique," will not be able to join us this fall owing to a major problem at the US consulate in Kinshasa. Her visa interview was postponed when a tech glitch forced cancelation of all interviews until late August, & then the backlog was so great that ordinary citizens had to wait on urgent medical cases & government business.

August-September was the window of time she could leave her Matthew 25 ministries in Congo, so she concluded prayerfully that her travel to the US will have to be postponed to another year. We will miss seeing you, Maman Monique! But we pray for your work.

Community Charity School Sparkles for New Year



The volcano in May 2021 left CCS's grounds covered in sharp rocks & debris, so the kids could not safely play. Before the new school year, they worked with teachers & volunteers to clean it all up, removing stones, covering with soil. The principal is leading!



MORE RENOVATIONS AT FEBA'S WOMEN'S CENTER

Inspired by the generosity of Nassau Presbyterian's gift of a new roof (see previous newsletter), & several large anonymous donations, FEBA decided to carry out some needed renovations at the Women's Center to make it ready to house an expanded educational program.

The 2-story Center was built with an open courtyard on one side, for outdoor activity & a car park (everything must be inside the high concrete security fence & heavy yellow metal door, visible at the top of the photos). Severe rains flooded the court, so it was covered, to create an assembly area. Now this courtyard is being incorporated into the building, to provide 3 more classrooms on the 2nd floor & a more formal assembly space on the 1st floor.



Above: Large cement pillars with heavy steel bars inside are built in the courtyard. Right: Then similar steel & concrete structures are being extended across the courtyard to hold up the 2nd floor.

WHY EXPAND?

Many more young women seek career training to become self-supporting than the sewing school can accommodate, including a significant number for whom sewing is not the best path.

FEBA has long wanted to add a culinary division, cosmetology, computer studies, etc., (see Nov. 2019 news) but there are significant challenges. One is space; another is salaries for teachers. Efforts to address the salary question are on-going, but it seemed good to work on the space problem while construction was being done on the roof. Stay tuned for more exciting news!

A Tragic Story & FEBA's Response

Each week at least 10 victims of various forms of violence, mostly girls & women but also children, come to FEBA for help. Each receives appropriate assistance, always counsel but also means to deal with their situations. For young girls forced into prostitution to survive, it may be practical training; for women, microloans are most common.

Maman N. came to FEBA just recently. Her story is horrific, as even a very brief summary shows. She & twin sister were orphans rescued as infants by Roman Catholic nuns. Her sister died but little N. was adopted by a Belgian nun, who loved her & gave her a good education. Then she married an educated Congolese man... & life became hell. He alternated locking her up & selling her sexual services to his friends, stealing the property her mother gave her (such a shock that it killed her mother), & finally raping his own daughter.

But Maman N. has found her way to FEBA, & she is receiving spiritual care day by day, & FEBA is preparing to set her up in business. Anyone who would like to contribute, please know your donation will be well used & will help save her life & her daughter's.

CONTRIBUTE OR GET INVOLVED

Donate securely via PayPal at <https://www.paypal.com/us/fundraiser/charity/1233641>, on FEBA, Inc. on Facebook, or on our website www.WomanCradleofAbundance.org. OR join our **monthly sustaining donations** & make remembering our friends in Congo easy!

Please designate "Sewing School" or "Goma School" or "Micro-loan Program" or "Farm Needs," or "Sustaining Gift" to support ongoing work.

Checks payable to Woman, Cradle of Abundance can be mailed to the treasurer at:

Woman, Cradle of Abundance
attn: John McGlaughlin, Treasurer
115 Maine Ave., Cherry Hill, NJ 08002

Does your company match donations? Consider nominating Woman, Cradle of Abundance. Shopping on Amazon? Name us: Amazon Smile.

Volunteer: Contact Cheryl Ciaranca, Community Outreach Coordinator, at cciaranca@gmail.com or 215.292.3290 to discuss ways to partner with Woman Cradle of Abundance.