

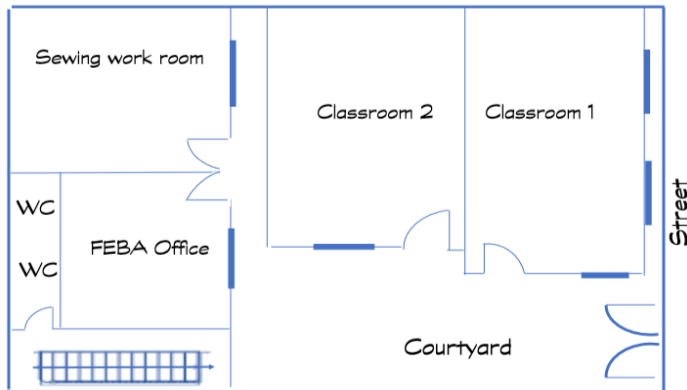
MOVING IN TO THE WOMEN'S CENTER!

In late July the sewing school moved into the Women's Center! In August, the first Monthly Meeting (the 2nd Tuesday) gathered there for the first time. There were tears of joy, singing & dancing, & delight! Rejoice with us!



The women are seated in the courtyard in front of classroom 2, with the FEBA office at the back. When more are present, chairs can be set in the stairwell (left of picture), in front of classroom 1 (right). Several more rows fit in front of these women. Also an overflow may sit in the classrooms with open windows & doors so that 150 to

200 can be accommodated. In difficult days when transportation is very expensive, fewer women can come, but some are always present. (When posing for photos it is traditional to look solemn: this is solemn joy.)



The outer blue line is actually a cement wall (on the street or enclosing the courtyard) or the wall of the building. For safety the only windows on the ground floor are in the courtyard.

The classrooms serve for literacy & sewing on a daily basis, but will also be used for other educational programs. The office will enable FEBA to keep its records safely. Graduates who work for FEBA will use the sewing room.

Thanks to Susan Lidstone for producing our floor plan!!



Students are delighted with new machines! (We asked them to break with tradition & smile.)



The Sewing School at Work in its New Home!



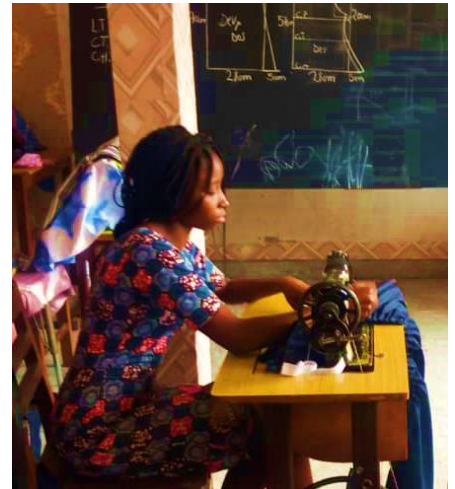
Maman Mianda teaches literacy.



Classroom 1 windows face the street; the narrow passage between the building and the high wall around the Center admits light. (The cement block wall can be seen through the window.) The ventilation spaces are placed in the wall overlooking the next neighbor's compound.



Classroom 2 (above) opens onto the courtyard. The back wall forms one side of the hall between the classroom & sewing work room.
Right: sewing patterns are drawn on the board: that is all you have!



CONTRIBUTE OR GET INVOLVED

Contribute: Donate securely via Stripe at www.WomanCradleofAbundance.org/donate .
Checks payable to Woman, Cradle of Abundance can be mailed to the following address:
Woman, Cradle of Abundance
attn: John McGlaughlin, Treasurer
25 Alexander St., Princeton, NJ 08525

Volunteer: Contact Cheryl Ciaranca, Community Outreach Coordinator, at cciaranca@gmail.com or 215.292.3290 to discuss ways to partner with Woman Cradle of Abundance.